

Graduate Prospectus

Join an award-winning team, work on real projects, and grow your career from day one.



Graduates, help shape the places where people live, work and thrive

Offices in Chester, Manchester, and Newcastle

More than ever, we need ambitious and driven graduates to help us deliver the infrastructure communities across the UK rely on.

Our graduate roles offer the opportunity to work across a wide range of sectors – from housing and commercial schemes to major energy and transport infrastructure projects. You'll play a vital role in providing strategic thinking and expert advice that helps fulfil our clients needs, secure consents and deliver high-quality, sustainable solutions.

Content

SECTION 1 Plan your future with us

SECTION 2 Life at Axis

SECTION 3 What we do

SECTION 4 Who we work for

SECTION 5 Why work with us?

SECTION 6 The role

SECTION 7 How to apply



Plan your future with us

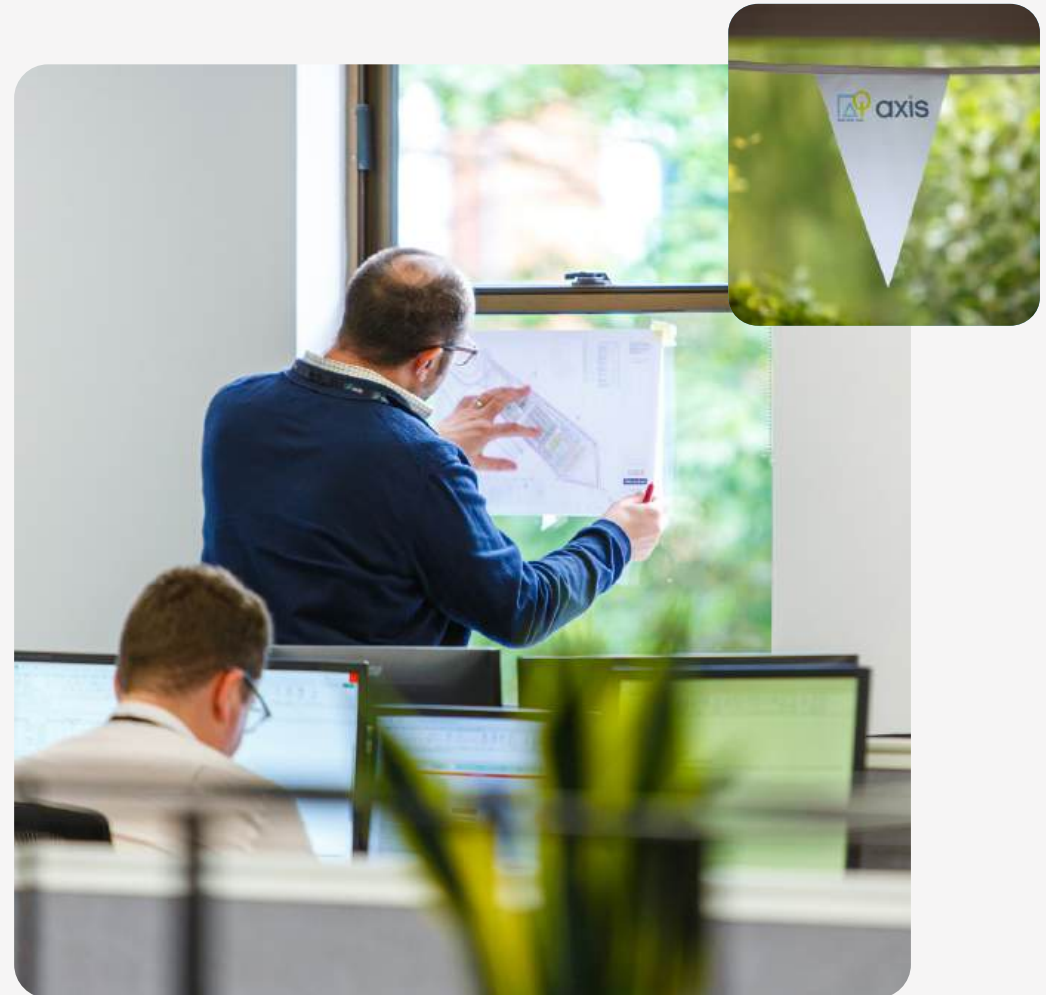
For more than 25 years, Axis has been assisting clients with the delivery of projects to create a better tomorrow.

As a leading national planning and environmental consultancy, we're passionate about providing expert advice that ensures development is appropriately located, well considered and, most importantly, deliverable. We have a deep understanding of the planning process and help our clients to negotiate it in the most efficient manner. We are focussed on sustainability and securing beneficial outcomes for the environment.

Our success is driven by the expertise, knowledge and endeavour of our team – the town planners, landscape architects, transport planners and environmental consultants who work together alongside a host of external specialists to deliver results.

And now we're looking for the next generation of innovators and experts to push us forward.

We're committed to identifying potential and propelling career paths, nurturing talent and cultivating experience. Being part of our team, means forging a bright future – for yourself, our communities and the planet.



Life at Axis:

Culture, Values & Making a Difference

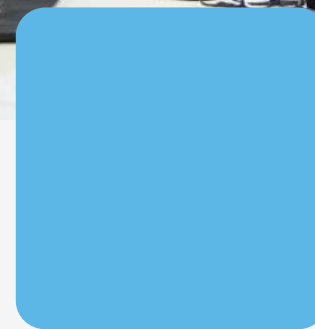
The way we work together is just as important as the projects we deliver. Our culture is built on collaboration, respect and a shared commitment to making a positive impact – on our communities, our clients, and the environment.

Driven by purpose

Sustainability sits at the heart of everything we do. Whether we're helping clients transition to net zero, supporting biodiversity, or shaping places that improve lives, we're motivated by the knowledge that our work matters.

An employee-owned company

We are an Employee Ownership Trust so every colleague has a stake in the future of Axis. That means we share in successes, shape decisions together, and work in the best interests of our people.



Life at Axis:

Culture, Values & Making a Difference

Beyond the office

Building connections outside of project work helps build successful teams. From Friday breakfast clubs to summer socials and charity challenges, there are plenty of opportunities to get involved, relax with colleagues, and make friends along the way.

Your future, supported

We're proud to be an award-winning consultancy that invests in its people. With structured career progression, professional mentoring, and encouragement to pursue your interests, you'll have the support you need to grow and thrive.

At Axis, you won't just be starting a career – you'll be joining a community of passionate professionals who are committed to making a difference.



What we do

Whether it's where we live or work, how we travel or how we manage our resources, we're reconfiguring the world around us today for a better built environment tomorrow.

We're experts at overcoming complex challenges in the key areas of planning, environment, design, and transport planning to deliver innovative solutions for our clients and communities.



Providing a full range of town planning services, primarily focused on major development projects.



Our landscape team provides holistic input from urban design to habitat creation to sustainable urban drainage solutions.



We are experts in the preparation and coordination of Environment Impact Assessments – a critical component of infrastructure planning.



Providing focused advice and support on transportation planning, from appraisals and assessments to travel plans and project management.

Who we work for

We're a trusted partner for some of the biggest and best-known names across Europe, working on multi-million-pound projects for private companies and public organisations.

As our world changes, we support our clients in the transition to net zero, which is increasingly shaping the broad variety of sectors across which we work.



ENERGY

Renewables | Carbon Capture | Hydrogen

RESIDENTIAL

Homes | Holiday Accommodation | Hotels

INFRASTRUCTURE

Rail | Airports | Hospitals

COMMERCIAL & INDUSTRIAL

Manufacturing | Motorway Services | Logistics

REGENERATION & PLACEMAKING

Urban Design | Leisure | Flood Defence

WASTE & MINERALS

Energy from Waste | Quarries | Landfill



Why work with us?

Our people are at the heart of everything we do.

We provide a comprehensive package of benefits designed to support your wellbeing, career development and work-life balance, with enhancements that go beyond many of our competitors.

As an Employee Ownership Trust, we also share our success directly with colleagues through annual tax-free bonuses. It is an exciting time to join our growing business, where every contribution is recognised and everyone has the opportunity to share in our success.

HIGHLY COMPETITIVE SALARIES

ANNUAL BONUSES

PRIVATE HEALTHCARE - THREE OPTIONS

**ENHANCED PENSION CONTRIBUTIONS
AND PENSIONS ADVICE**

APC MENTORING

HYBRID WORKING - OFFICE / HOME / REMOTE

ENHANCED MATERNITY AND PATERNITY PACKAGES

'DEATH IN SERVICE' LIFE INSURANCE COVER

BEING PART OF AN EMPLOYEE OWNERSHIP TRUST

Axis is managed in the interests of all employees
and there are specific benefits associated with
Trust status including tax-free bonuses

PAYMENT OF PROFESSIONAL FEES

CYCLE TO WORK SCHEME / EV LEASING SCHEME

PATHWAY TO CHARTERSHIP MENTORING

The role

We look to recruit graduates of the highest calibre to join our team.
The following skills and attributes are what we're looking for:

Educational Background

- Bachelor's degree (2:1 or above) in either a directly related subject (e.g. planning, landscape architecture) or a related discipline with strong transferable skills

Knowledge of EIA & Environmental Disciplines

- Familiarity with the Environmental Impact Assessment process is desirable

Planning Knowledge

- Understanding of the UK planning process and relevant legislation, or a demonstrated ability to learn quickly in this area

Technical Proficiency

- Highly competent in Microsoft Word and Excel
- GIS and/or CAD software knowledge would be advantageous

Communication & Teamwork

- Excellent verbal and written communication skills
- Ability to convey complex information to diverse audiences (colleagues, clients, stakeholders) in a professional manner

Analytical & Research Skills

- Comfortable in understanding regulations, data and some technical documentation
- Capable of identifying key issues and synthesising information into concise reports

Project Management & Organisation

- Strong attention to detail, able to balance multiple tasks and deadlines
- Ability to adapt to changing project demands and maintain a proactive approach

Driving Licence

- Full UK driving licence required for occasional travel to project sites and client meetings – an advantage

Ambition & Initiative

- Self-driven, eager to learn, and motivated to advance in a busy consulting environment
- Committed to personal development and delivering high-quality outcomes for clients

How to apply

Email alistairhoyle@axis.co.uk
with your CV and covering letter.

For more information about our work,
clients and culture visit:
axis.co.uk

Our careers page can be found at:
axis.co.uk/careers

And you can follow us on:

 [@sustainableaxis](https://www.linkedin.com/company/sustainableaxis)

